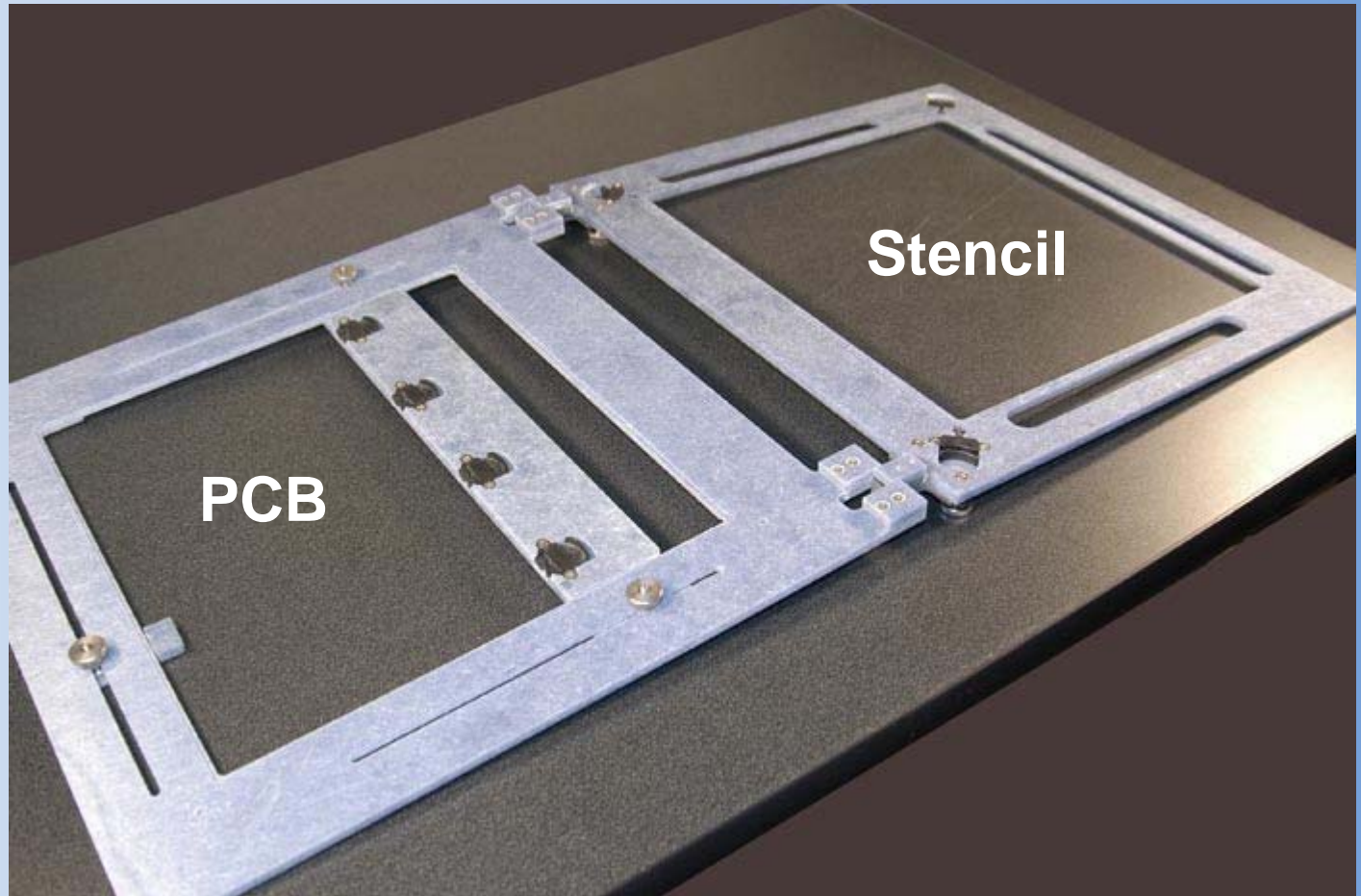




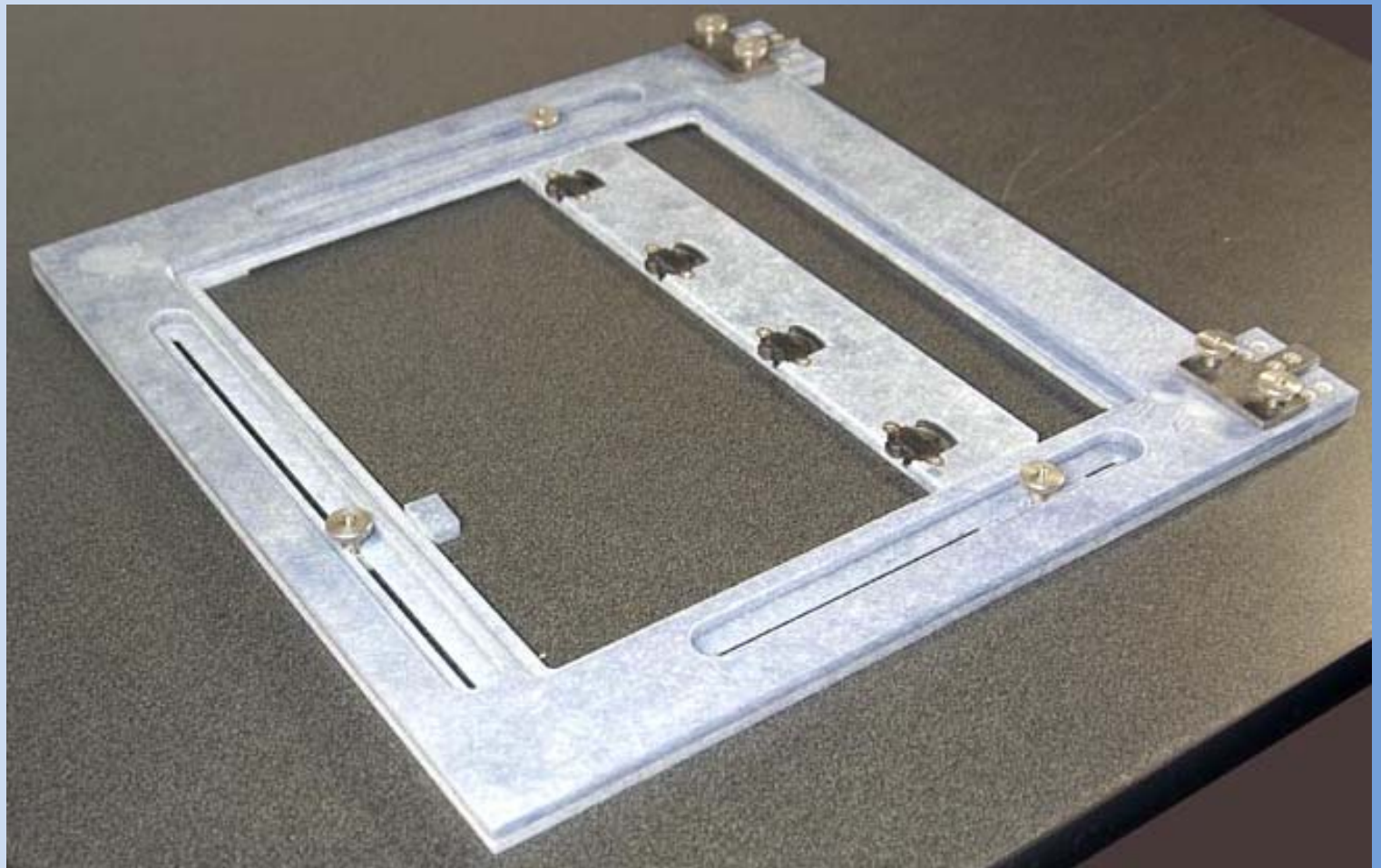
Quick Print by Photo Stencil

The next sequence of 12 pictures shows the process for printing prototype PCB's

Shows the Quick Print Clamshell Fixture for holding both the Stencil and the PCB. PCB is held on the left side of the clamshell and the stencil is held on the right side.



Shows the Quick Print Clamshell fixture closed



**PHOTO
STENCIL**



Shows the PCB and stencil to be placed in the Quick Print Clamshell Fixture

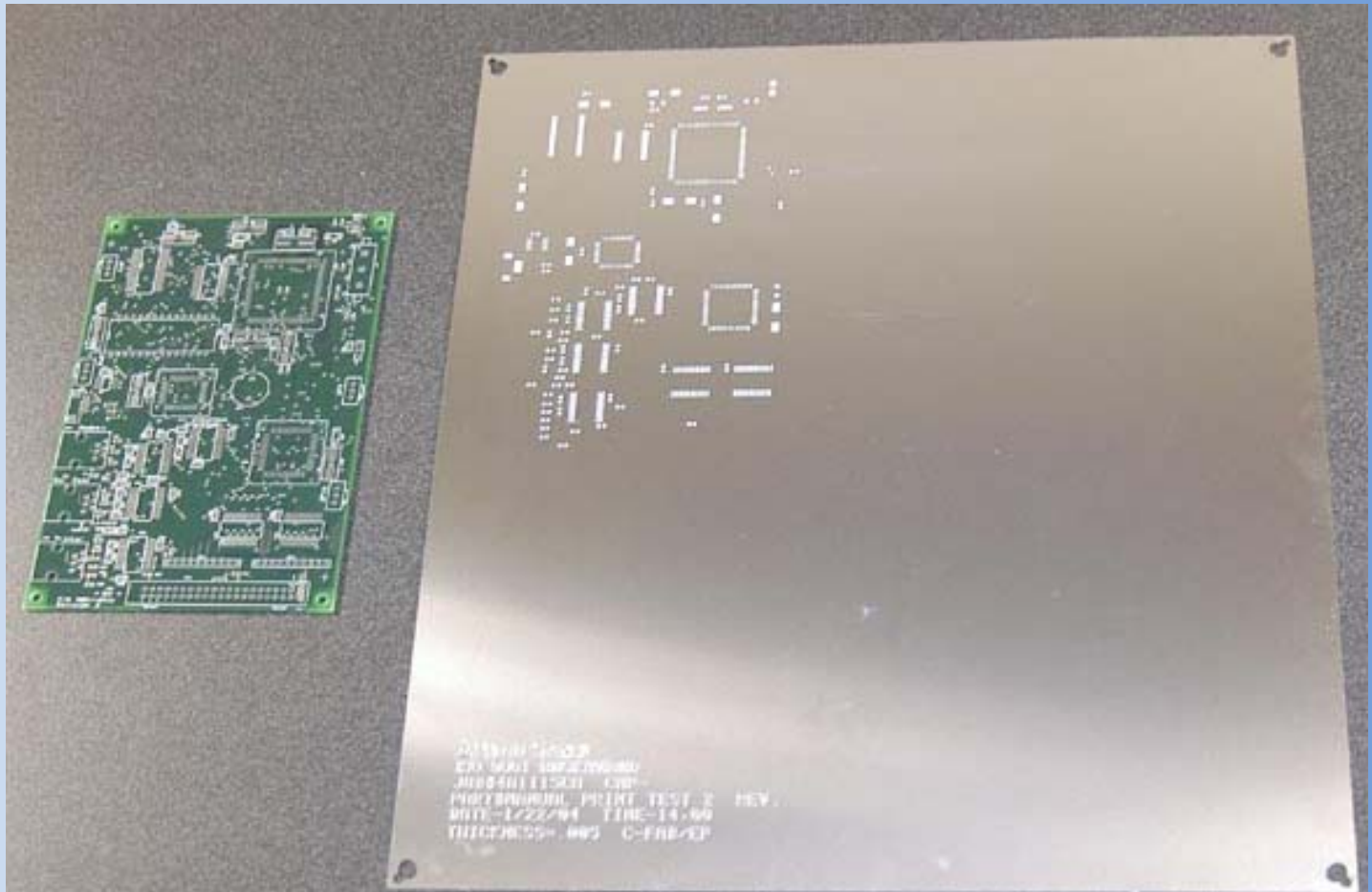
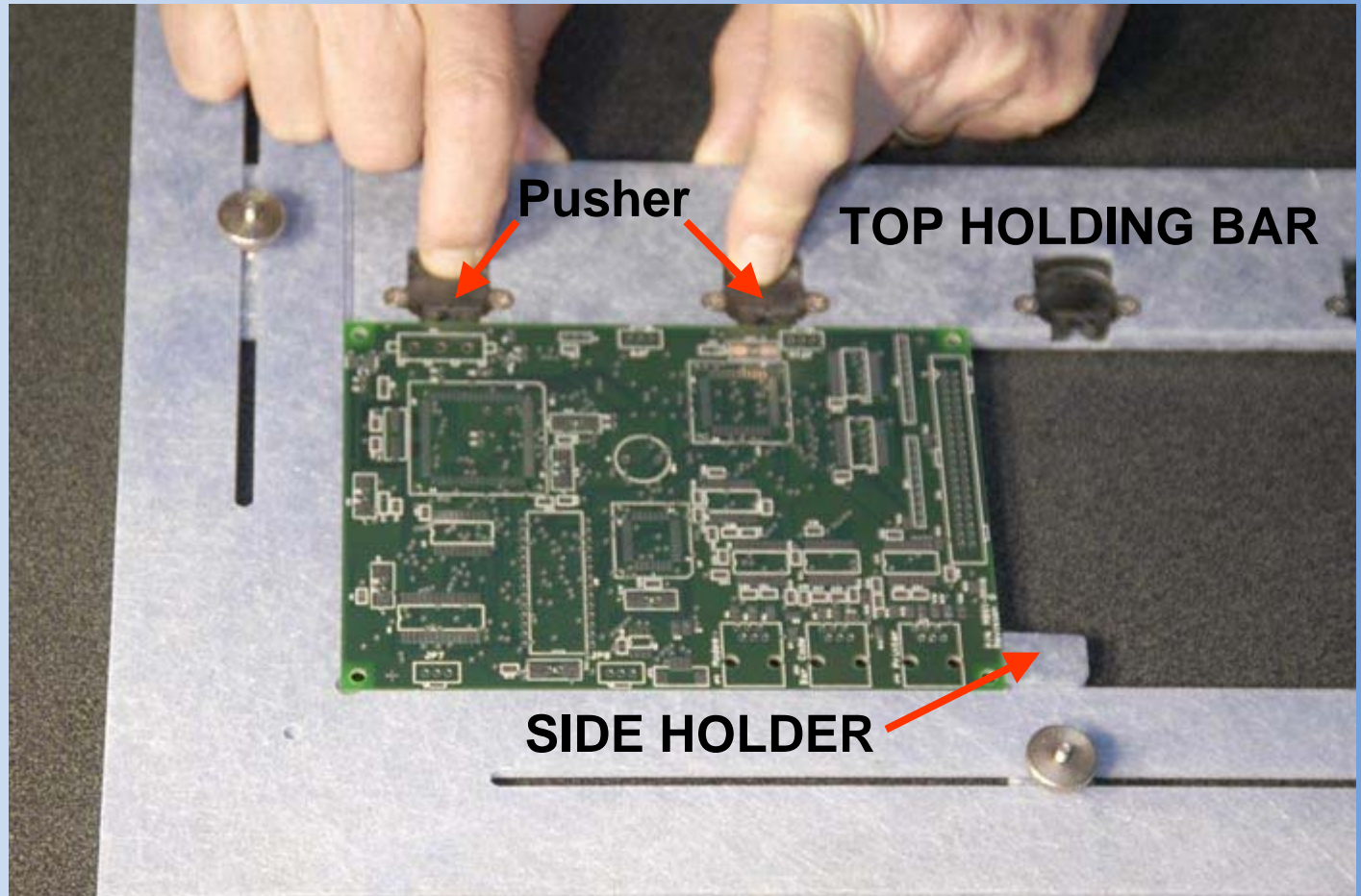


PHOTO
STENCIL



PCB positioned in the Quick Print Clamshell fixture.
The Top Holding Bar is moved and locked into place.
The Side Holder is locked into place.
Pusher holds PCB in place (Set up 30 seconds)



Stencil is positioned in place by first placing it over one corner tooling pin and then adjusting the other 3 puller pins to stretch and hold the stencil in place. (Set up 30 seconds)



**PHOTO
STENCIL**



Close up of puller pin that holds the stencil in place. There are 3 puller pins located on 3 corners and 1 permanent pin located in the 4th corner.



Puller Pin

Quick Print is closed and the final adjustment is made to align the stencil to the PCB. This done by loosening the 4 adjustment knobs in the lower corner and aligning the stencil with the PCB and retightening knobs. (Set up 30 seconds)

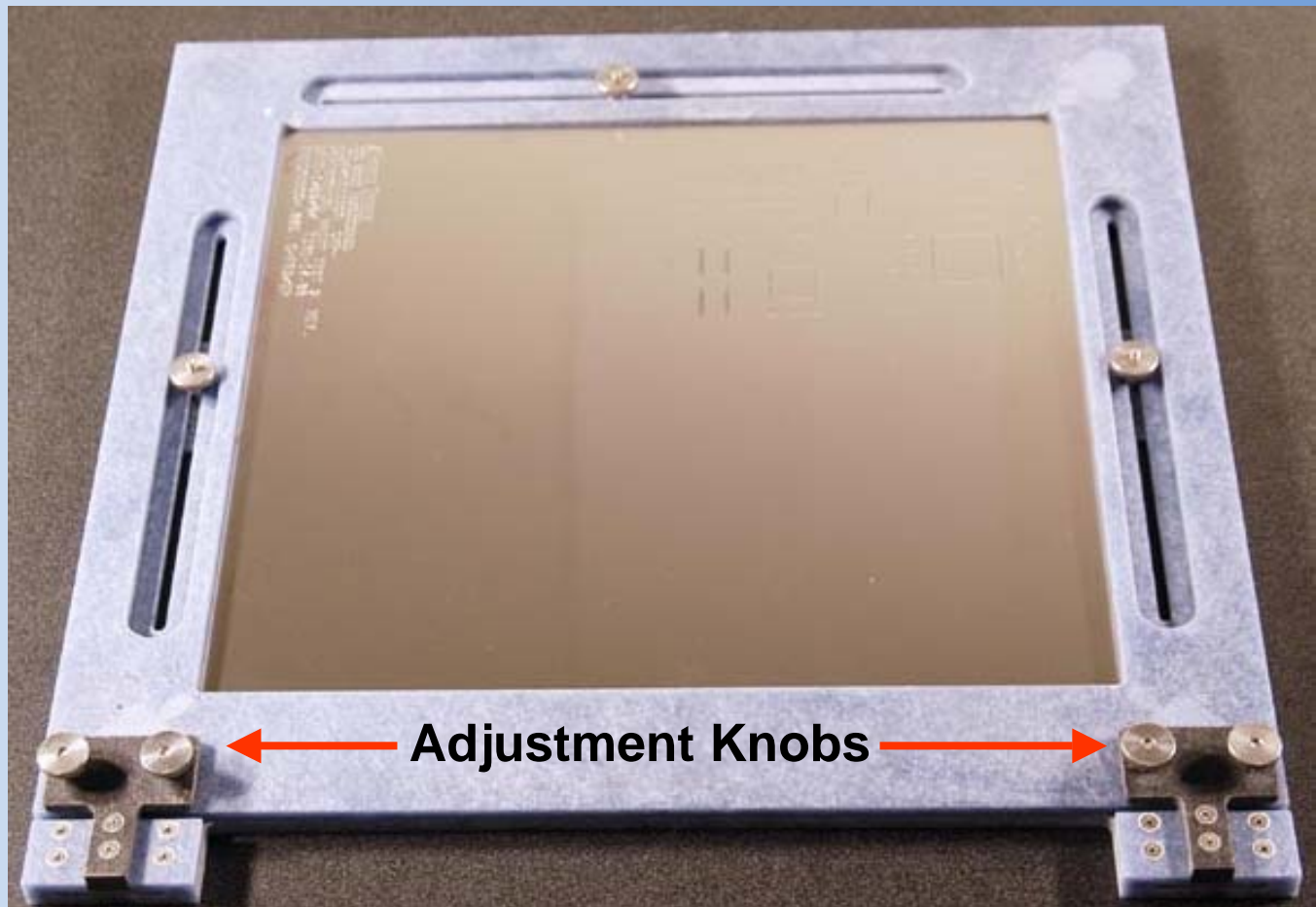
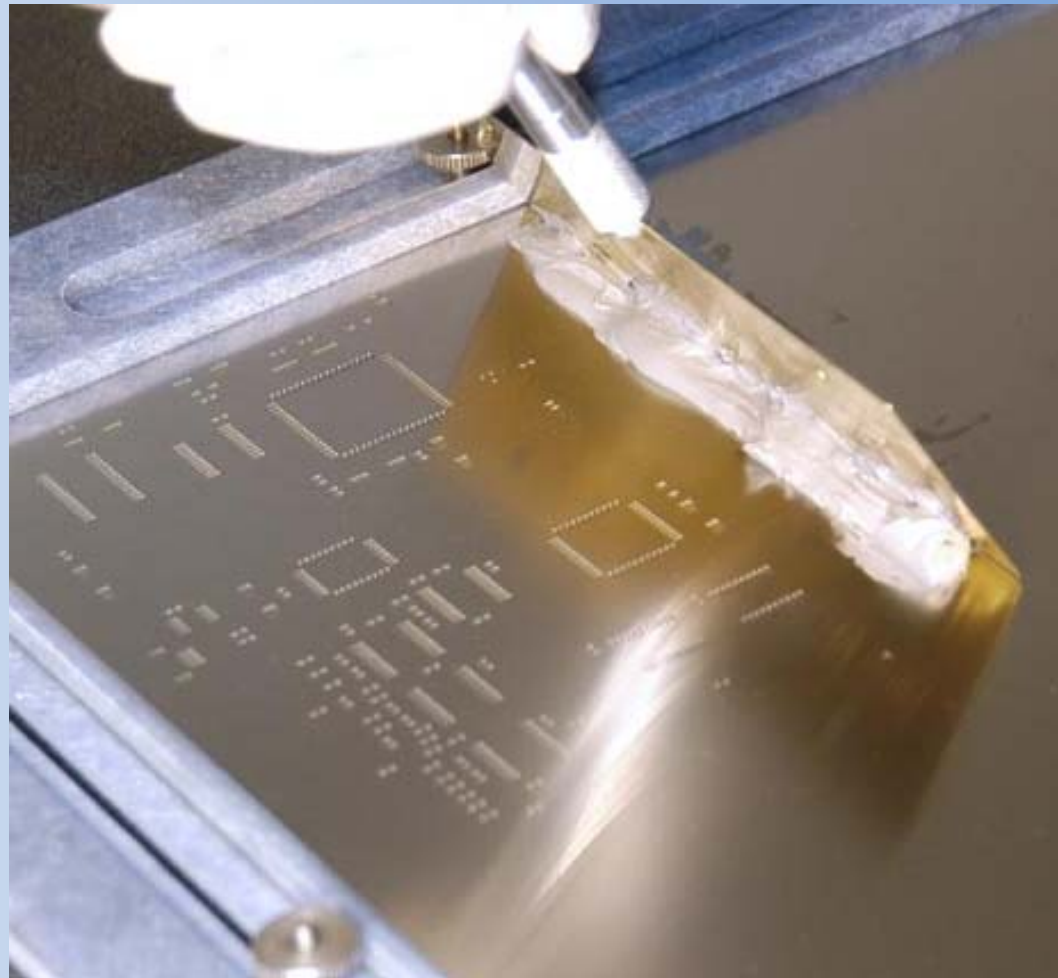


PHOTO
STENCIL



Shows printing solder paste onto the PCB.
(Cycle time 30 seconds)



**PHOTO
STENCIL**



Solder bricks printed on the PCB

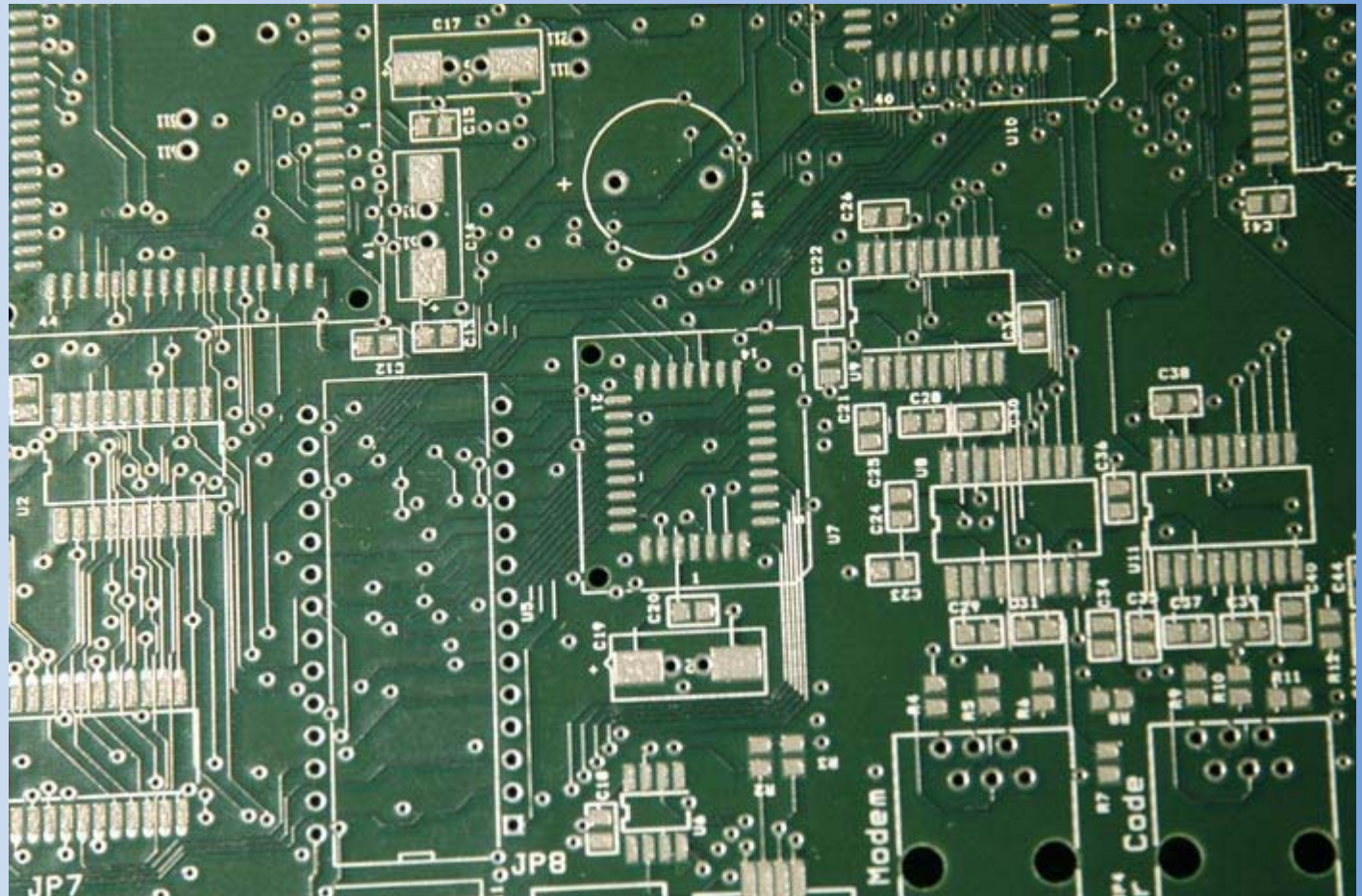


PHOTO
STENCIL



Ready to print new board. Just pull back the pusher, insert a new board and close the Quick Print clamshell. No further adjustments are necessary since the stencil is already aligned to the board. (Set up 10 seconds)

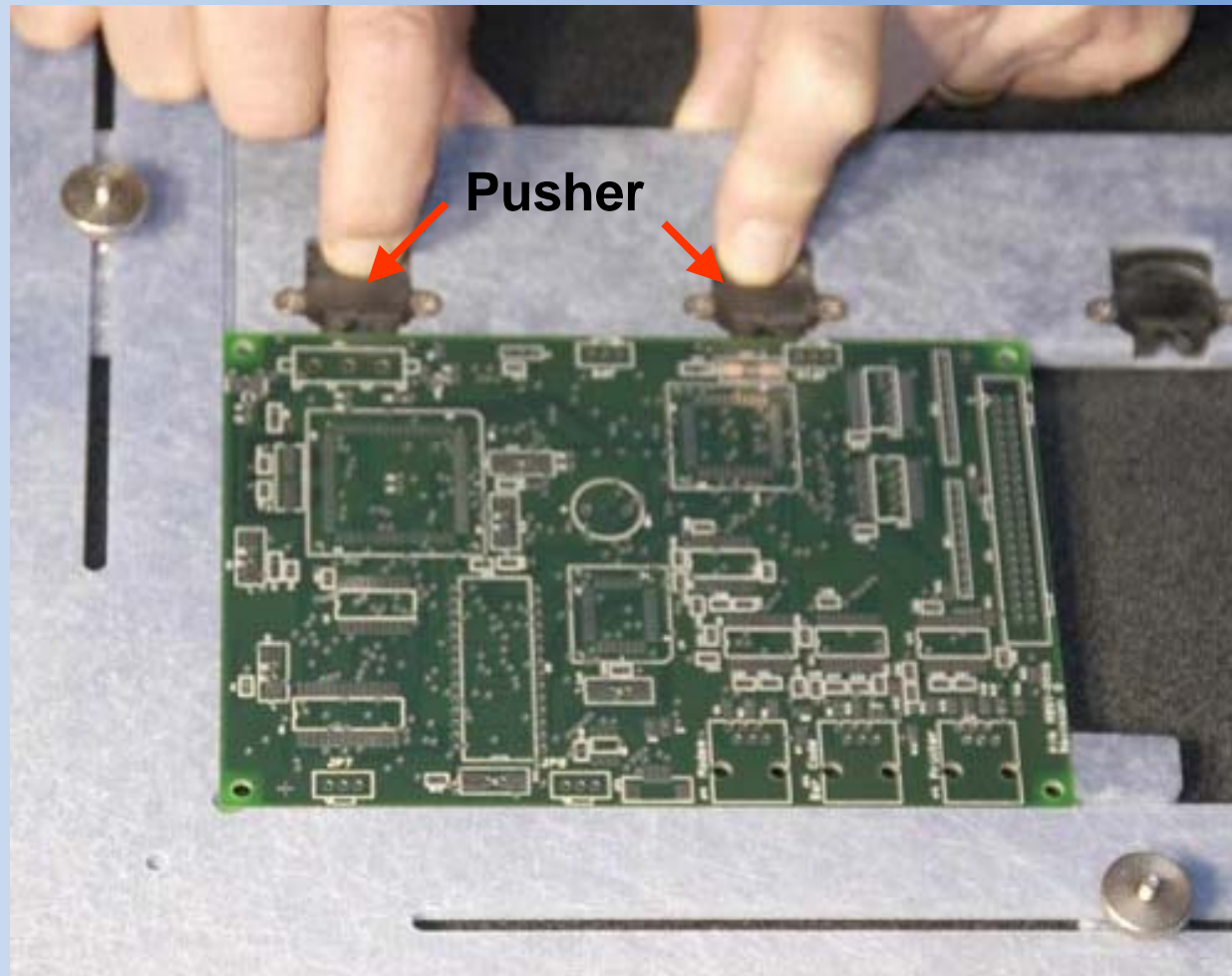
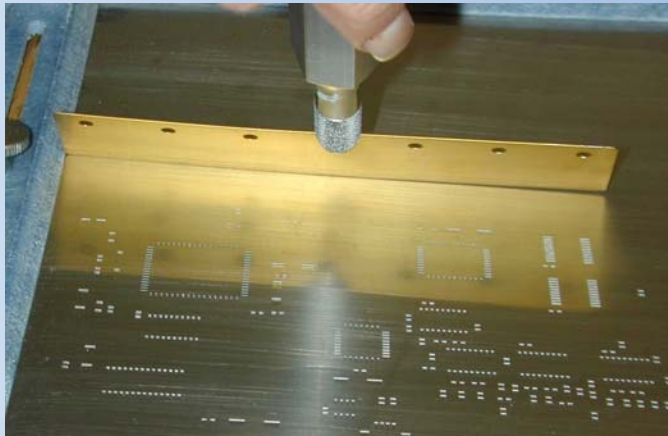


PHOTO
STENCIL



Squeegee Blades for the Quick Print



Squeegee Blade with handle for small boards less than 4" wide.



Squeegee Blade with stiff shim holder for boards over 4" wide. The stiff shim holder is necessary to get a good paste wipe for large boards.